

Guardian Acuity Equity Fund

Open Ended Growth Fund

April 2017



Tel: +94 112039377 E-mail: info@guardianacuity.com

HIGHLIGHT

The fund recorded a 9.75% return for the month and 7.62% return for 3 Months. The YTD return of the fund was 7.28% vs. Benchmark ASPI return of 6.14%, recording a 1.14% outperformance.



Asanka Jayasekara

Fund Manager

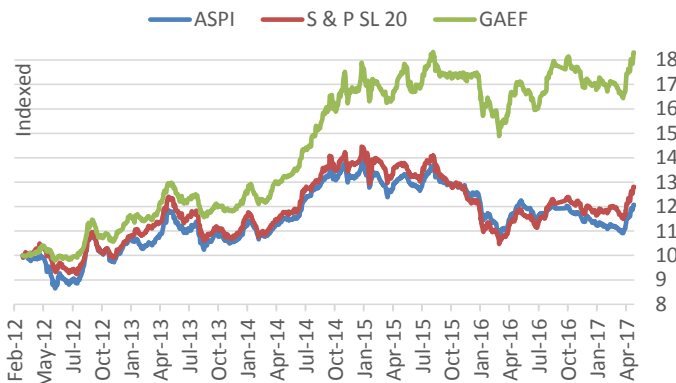
RETURNS*

PERIOD*	FUND	BENCHMARK ASPI	S&P SL 20
2017 April	9.75%	9.05%	10.11%
3 Months	7.62%	7.79%	8.50%
Year To Date (YTD 2017)	7.28%	6.14%	8.29%
Since Inception Cum.	79.21%	20.70%	28.11%
Since Inception CAGR	11.93%	3.70%	4.90%

Note : ASPI (Benchmark) and S&P SL 20 are based on CSE data as of 28th April 2017

* Performances are based on month end prices. Performance data included in this document represents past performance and is no guarantee of the future results.

GAEF VS. THE MARKET



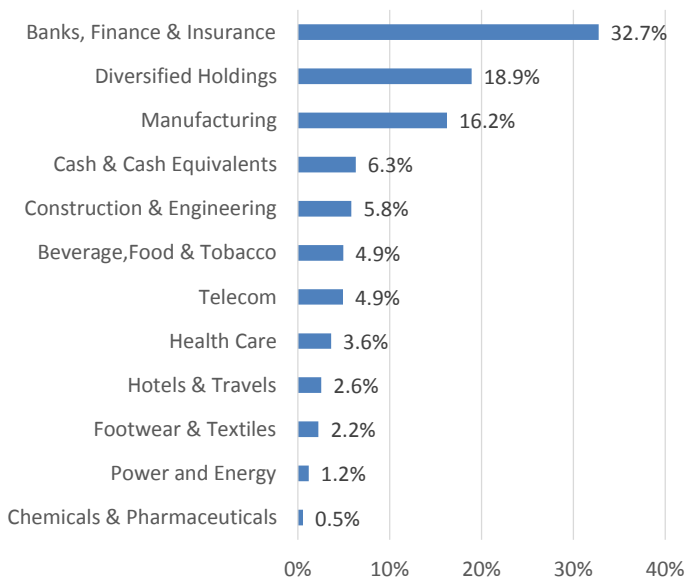
TOP 5 HOLDINGS BASED ON NAV

STOCK	TICKER	% OF NAV
SAMPATH BANK PLC	SAMP.N	7.04%
TOKYO CEMENT COMPANY (LANKA) PLC	TKYO.N/X	6.26%
PEOPLE'S LEASING & FINANCE PLC	PLC.N	5.79%
MELSTACORP LIMITED	MELS.N	5.69%
CARGILLS (CEYLON) PLC	CARG.N	4.94%

ABOUT THE FUND

Guardian Acuity Equity Fund is a growth fund which invests in a diversified portfolio of listed equity securities with the objective of achieving medium to long term capital appreciation.

SECTOR ALLOCATION (WITH CASH & CASH EQUIVALENTS)



FUND SNAPSHOT

Inception Date
Bloomberg Code
Fund Size as of 30-04-2017
Minimum Investment
NAV Per Unit as of 30-04-2017

27th February 2012
GACUEQ: SL
LKR 455.01Mn
LKR 1,000
LKR 18.1112

FUND FEES

Management Fee*
Custodian & Trustee Fee*
Exit Fee**

2.25% p.a.
0.3% p.a.
2% p.a.

*As a percentage of NAV

**If withdrawn prior to 1 year